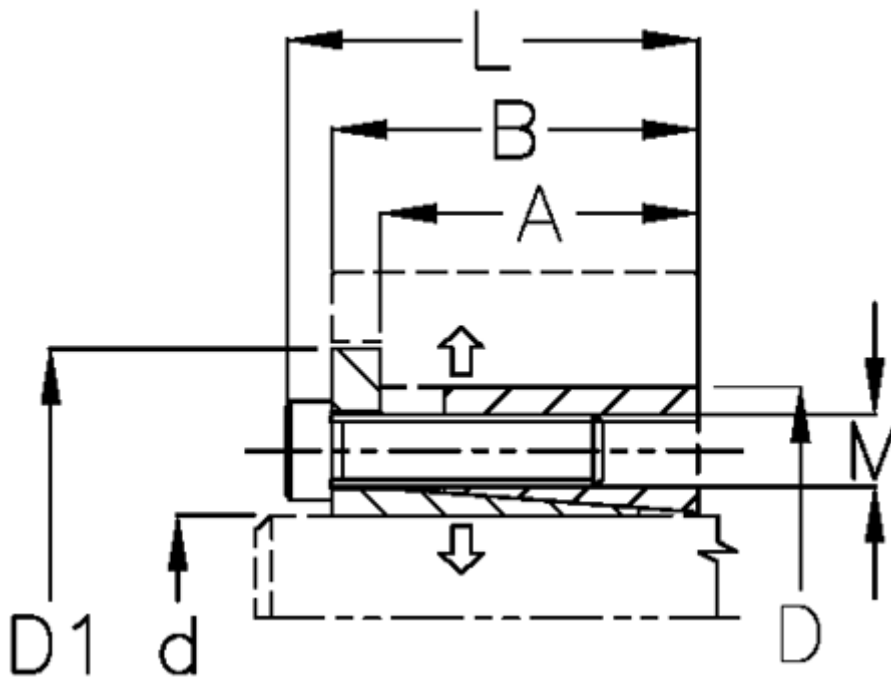


Article number: 434600065

Description: Rota-fix shaft-hub connection ES 65x95
Steel

Note: Self centering - high transmissible torque. During the clamping, the hub can axially displace.

Measures



A mm	= 24.0	M mm	= M8
B mm	= 33.5	P N/mm ² surface pressure on shaft/hub	= 110
D1 mm	= 104	Surface roughness	= -
d H8 mm	= 65	T N m torque	= 2600
D mm	= 95	Ts N m bolt tightening torque	= 41
Fit tolerance	= -		
F kN torque	= 80		
L mm	= 41		